

200 bp DNA Ladder

Cat. no. 4992802/4992803

Storage: -30~-15°C for 2 years. For frequently use, it can be stored at 2-8°C for 3 months.

Concentration: About 0.1 mg DNA/ml

Product size

4992802	300 μ l (50 lanes)
4992803	4 \times 300 μ l (200 lanes)

TIANGEN BIOTECH (BEIJING) CO., LTD.

[HTTP://WWW.TIANGEN.COM/EN](http://www.tiangen.com/en)

The product is used for research only, neither intended for the diagnosis, or treatment of a disease, nor for the food, or cosmetics etc.

Description

200 bp DNA Ladder consists of twelve double-stranded DNA bands that are suitable as molecular weight standards for agarose gel electrophoresis.

The product is ready-to-use; it is premixed with 1 \times Loading Buffer for direct loading 3~6 μ l on agarose gel electrophoresis.

The ladder is composed of twelve individual DNA fragments (in base pairs): 4000, 2200, 2000, 1800, 1600, 1400, 1200, 1000, 800, 600, 400 and 200. It contains one intense band (1000 bp) for easy orientation. To load 6 μ l of the product will provide 50 ng per DNA fragment with one intense fragment of 100 ng.

Buffer Contents

10 mM Tris-HCl (pH 8.4)
 10 mM EDTA
 0.02% Bromophenol Blue
 5% Glycerol

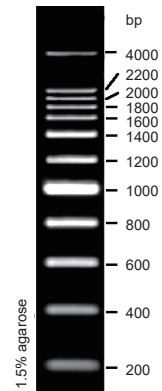
Protocol

1. Directly load 3~6 μ l of the product on the agarose gel (load 1 μ l per 1 mm gel lane. The loading volume can be increased appropriately for wide lanes).
2. Electrophoresis condition: 0.7~1.5% agarose gel, 4~10 v/cm voltage.
3. DNA marker can be visualized using ethidium bromide under UV light.

Recommendations

1. Directly use, do not heat before loading.
2. Please use new agarose gel and change electrophoresis buffer in time, so as not to affect the electrophoresis results.

200 bp DNA Ladder



6 μ l product,
 10 cm gel length,
 8 v/cm voltage,
 0.5 \times TBE Buffer