

## 100 bp DNA Ladder

Cat. no. 4992798/4992799

Storage: 4°C for 2 years (For long term storage, store at -20°C)

Concentration: About 0.1 mg DNA/ml

Product size

4992798	300 $\mu$ l (50 lanes)
4992799	4 $\times$ 300 $\mu$ l (200 lanes)

TIANGEN BIOTECH (BEIJING) CO., LTD.

[HTTP://WWW.TIANGEN.COM/EN](http://www.tiangen.com/en)

The product is used for research only, neither intended for the diagnosis, or treatment of a disease, nor for the food, or cosmetics etc.

### Description

The 100 bp DNA Ladder marker consists of eleven double-stranded DNA bands that are suitable as molecular weight standards for agarose gel electrophoresis.

Since this product is premixed with 1 $\times$  Loading Buffer, it is convenient to load 3~6  $\mu$ l of this product to agarose gel electrophoresis directly.

The ladder is composed of eleven individual DNA fragments (in base pairs): 1500, 1000, 900, 800, 700, 600, 500, 400, 300, 200, and 100. It contains one intense band (500 bp) for easy orientation. To load 6  $\mu$ l of the product will provide 50 ng per DNA fragment with one intense fragment of 100 ng.

### Buffer Contents

10 mM Tris-HCl (pH 8.4)  
 10 mM EDTA  
 0.02% Bromophenol Blue  
 5% Glycerol

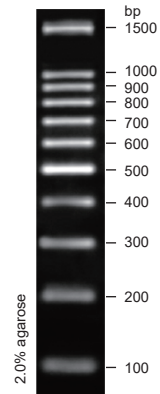
### Protocol

1. Directly load 3~6  $\mu$ l of this product to the agarose gel (load 1 $\mu$ l product per 1 mm gel lane. The loading volume can be increased appropriately for wide lanes).
2. Electrophoresis condition: 0.5~1.0% agarose gel, 4~10 v/cm voltage.
3. DNA marker can be visualized using ethidium bromide under UV light.

### Recommendations

1. Directly use, do not require heating.
2. For ideal results, please use new agarose gel and change electrophoresis buffer in time.

### 100 bp DNA Ladder



6  $\mu$ l product,  
 10 cm gel length,  
 6 v/cm voltage,  
 0.5  $\times$  TBE Buffer