

500 bp DNA Ladder

Cat. no. 4992947/4992948

Storage: 4°C for 2 years (For long term storage, store at -20°C)

Concentration: About 0.08 mg DNA/ml

Product size

4992947	300 μ l (50 lanes)
4992948	4 \times 300 μ l (200 lanes)

TIANGEN BIOTECH (BEIJING) CO., LTD.

[HTTP://WWW.TIANGEN.COM/EN](http://www.tiangen.com/en)

The product is used for research only, neither intended for the diagnosis, or treatment of a disease, nor for the food, or cosmetics etc.

Description

TIANGEN 500 bp DNA Ladder is ready-to-use molecular weight standards for agarose gel electrophoresis analysis.

The product is premixed with 1 \times Loading Buffer, so that it can be directly loaded onto the gel.

The 500 bp DNA Ladder is composed of eight double-stranded DNA fragments (in base pairs): 4000, 3500, 3000, 2500, 2000, 1500, 1000 and 500. It contains one intense band (2000 bp) for easy orientation. Loading 6 μ l of the product will provide 50 ng per DNA fragment with one intense fragment of 100 ng.

Buffer Contents

10 mM Tris-HCl (pH 8.4)
 10 mM EDTA
 0.02% Bromophenol Blue
 5% Glycerol

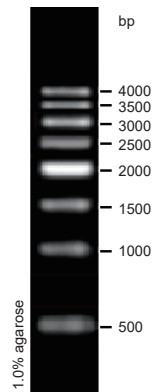
Protocol

1. Directly load 3~6 μ l of this product on the agarose gel (load 1 μ l per 1 mm gel lane. The loading volume can be increased appropriately for wide lanes).
2. Electrophoresis condition: 0.7~1.5% agarose gel, 4~10 v/cm voltage.
3. DNA marker can be visualized using ethidium bromide under UV light.

Recommendations

1. Directly use, do not heat before loading.
2. Please use new agarose gel and change electrophoresis buffer in time, so as not to affect the electrophoresis results.

500 bp DNA Ladder



6 μ l product,
 10 cm gel length,
 6 v/cm voltage,
 0.5 \times TBE Buffer